



**R&L Woodcraft**  
Where Custom is Standard.

# Request For Quote

Quote Date \_\_\_\_\_  
 Customer \_\_\_\_\_  
 Rep \_\_\_\_\_  
 Job Name \_\_\_\_\_  
 Delivery Date \_\_\_\_\_

**DIRECTIONS:** Refer to diagrams.  
 Any additional details can go in the Special Instructions field.

Style \_\_\_\_\_  
 Outside Back finished Y / N  
 If yes- Upholstered/ Wood / Other  
 Finished ends *specify as if sitting on the booth-* Left / Right / Both / Unfinished  
 Ends, if finished- Upholstered / Wood / Laminate  
 Booth Height \_\_\_\_\_  
 Top cap- Upholstered / Wood / Laminate  
 Crumb strip- None / Upholstered / Wood / Laminate  
 Base- Standard Base / Drop Seat / Single tier  
 Base Material- Upholstered / Laminate / Wood  
 Inside back Material \_\_\_\_\_  
 Seat Material \_\_\_\_\_

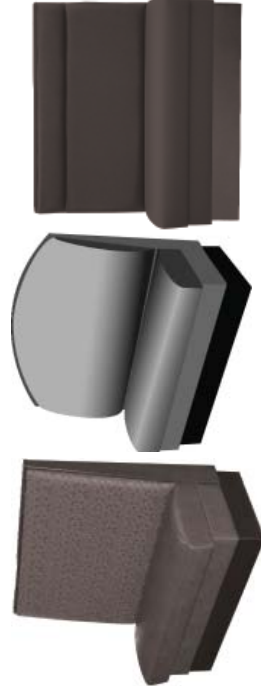
QTY	Booth Type	Length
2	S (single)	54"
4	D (double)	54"
1	B (banquette)	144"

QTY	Booth Type	Length

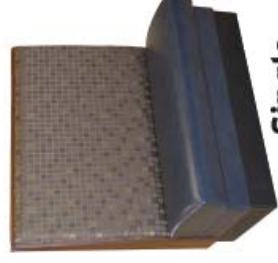
QTY	Booth Type	Length

*for example...*

Special Instructions:



**STYLE:** CL-Classic  
 FB-Fanback  
 HR - Headroll  
 CHH- Horizontal Channel  
 CHV- Vertical Channel  
 BT- Button Tufted



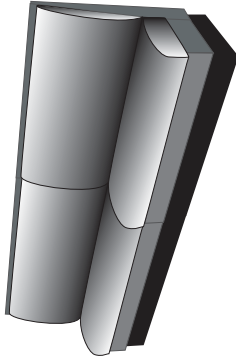
**Single**



**Double**

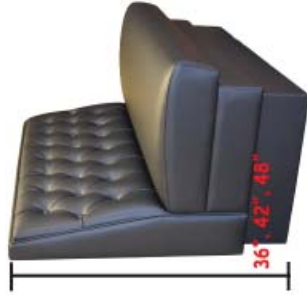
**BOOTH TYPE:**  
 S -Single  
 D -Double  
 B- Banquette  
 C- Corner

**LENGTH:** Standard size is 48"; all other lengths, please measure to the nearest quarter inch.



**HEIGHT:**

Standard height is typically 36", 42", or 48" measured from the floor to the top of the booth back.



**INSIDE BACK:**

Refers to the finish on the insides seat back; SM-Smooth, TF-Tufted, DF-Diamond Tufted, CH Channel back



**O/S BACK:**

Outside seat back; typically finished or not; standard fabric for finish is seat fabric unless noted otherwise



**ENDS:** Booth ends can be finished both, one end or not; Finishes include upholstery, wood or laminate



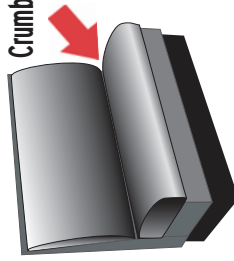
**TOP CAP:**

Standard finish for the top cap is upholstery used for the seat back; other options include wood or laminate



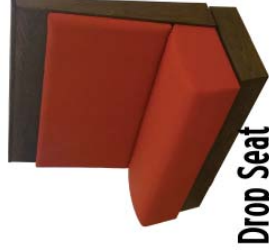
**CRUMB STRIP:**

Optional crumb strip may be added and finished in upholstery, wood or laminate.



**FABRICS:** Fabrics are customer choice. Please specify the manufacturer, type and color for both inside back and seat

**BASE:** The standard base features two tiers. The seat fabric is the standard vinyl for the upper tier with an option of rubber, vinyl or plastic laminate for the kick base.



**BASE:** A drop seat eliminates the top tier and opens up customization options for the single base.

**Standard Base**



**Drop Seat**

**BASE:** A single tier base is ideal for concrete curb applications.



**CIRCULAR BOOTHS:**

All corner, L or U Shaped booths are built in L shaped sections. Provide the dimensions for both wings of the section. Radius corner is standard; corner is standard; indicate in special instructions if the corner is squared.



**SPECIAL INSTRUCTIONS:** Use this section to specify any additional requests, directives or details.



R&L Woodcraft  
Where Custom is Standard.

Please return to orders@randlwoodcraft.com